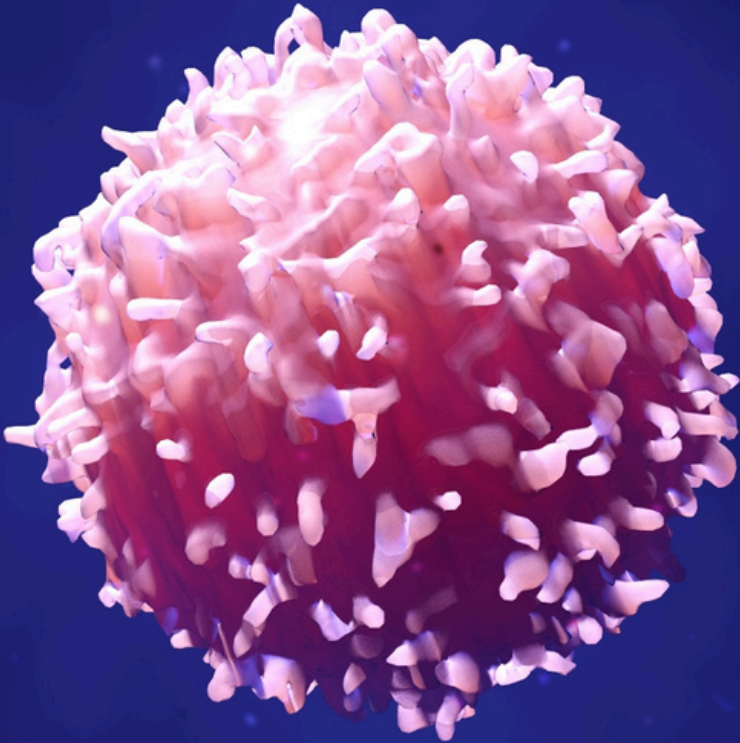


THE CORE CONCEPTS OF:

CANCER IMMUNOLOGY



HOSTED BY: JEFF MARTIN, PHD |
ONCOLEADER

ONCOLEADER
BECOME A LEADER IN ONCOLOGY

COURSE OUTLINE

Part	Video #	Lesson Title	Duration (m)
Part I: The Essentials	1	Introduction to Part I	1:10
	2	What is cancer?	13:55
	3	What is the immune system?	7:07
	4	The Cancer Immunity Cycle	3:25
Part II: Innate Immune Recognition	5	Introduction to Part II	0:39
	6	Intrinsic Cancer Cell Stress	5:11
	7	NK Cell Biology	6:56
	8	Macrophages and Dendritic Cells	7:27
Part III: The Adaptive Immune Response	9	Introduction to Part III	1:17
	10	Cancer Antigens	9:47
	11	Adaptive Lymphocytes	8:38
	12	T cell Priming	9:40
	13	T Cell Activity	8:04
	14	B cells & Plasma Cells	13:19
	15	Antibodies & TIL-Bs	10
	16	Immune Memory	11:29
Review & Transition	17	Revisiting The Cancer Immunity Cycle	12:35
Part IV: Cancer Immune Evasion	18	Hostile Tumor Microenvironment	15:46
	19	Tumors Are Like Wounds That Never Heal	12:32
	20	Cancer Cell-Intrinsic Immune Evasion Tactics	9:53